

Guidelines for Authors preparing an Abstract to be submitted to ISPRS Events

Orhan Altan¹, Ian Dowman², Florent Lafarge³, Clément Mallet⁴, Christian Heipke⁵

¹ ITU, Civil Engineering Faculty, 80626 Maslak Istanbul, Turkey - (oaltan, tozg, kultur, seker)@itu.edu.tr

² Dept. of Geomatic Engineering, University College London, Gower Street, London, WC1E 6BT UK - idowman@ge.ucl.ac.uk

³ Université Côte d'Azur, INRIA – Sophia-Antipolis, France – florent.lafarge@inria.fr

⁴ Univ. Gustave Eiffel, IGN-ENSG, LaSTIG – Saint-Mandé, France – clement.mallet@ign.fr

⁵ Institute of Photogrammetry and GeoInformation, Leibniz Universität Hannover, Germany - heipke@ipi.uni-hannover.de

Keywords: Manuscripts, Proceedings, ISPRS Archives, ISPRS Annals, Guidelines for Authors, Style guide.

1. Manuscript

1.1 Introduction

These guidelines are provided for the preparation of **abstracts submitted to ISPRS events** (Congress, Geospatial Week, Symposia, smaller events such as workshops). These guidelines are provided for the preparation of abstracts submitted to ISPRS events (Congress, Geospatial Week, Symposia, smaller events such as workshops). Abstracts are reviewed in a single-blind process. If this process leads to acceptance of the abstract, subsequently a camera-ready manuscript must be submitted following the guidelines for full papers (but, of course, incl. author names and affiliation). This camera-ready manuscript will be published in The International Archives of the Photogrammetry, Remote Sensing and Spatial Information Sciences, provided it arrives by the due date and corresponds to the guidelines. An example of a camera-ready manuscript can be found on the ISPRS web site under www.isprs.org/documents/orangebook/app5.aspx.

1.2 General Instructions

The abstract must have the following structure:

1. Title of the contribution
2. Author(s) and affiliation
3. Keywords (max. 6)
4. Main body (one page max)
5. Illustrations (one page max, optional)
6. References (8 max, optional)

Abstracts must contain the title, the author(s) names incl. affiliations, the keywords and a summary of the contribution (research question, relevance, solution, evaluation).

1.3 Page Layout and Length

The abstract must be compiled in one column for the title, author information and keywords, and in two columns for all subsequent text. Left and right justified typing is mandatory. All abstracts are limited to a length of two (2) single-spaced pages (A4 size), including figures, tables and references. The font type Times New Roman with a size of 9 pts. is to be used.

1.4 Style Guide

To assist authors in preparing their contributions, style guides are provided in Word and LaTeX on the ISPRS web site, see www.isprs.org/documents/orangebook/app5.aspx. Use of these style guides ensures that the paper is correctly formatted and is therefore strongly suggested.

Setting	A4 size page	
	mm	inches
Top	25	1.0
Bottom	25	1.0
Left	20	0.8
Right	20	0.8
Column Width	82	3.2
Column Spacing	6	0.25

Table 1. Margin settings for A4 size page.

2. Title, Author Information, Keywords

2.1 Title and Author Information

The title must appear centred in bold at the top of the first page with a size of 12 pts. Following the title, htype the full author(s) name(s), affiliation and mailing address (including e-mail), centred under the title. In the case of multi-authorship, indicate which author belongs to which organisation.

2.2 Keywords

Leave two lines blank, then type “**Keywords:**” in bold, followed by a maximum of 6 keywords. Note that ISPRS does not provide a set list of keywords. Therefore, include those keywords which you would use to find a paper with content you are preparing.

3. Main Body of Text

Type text single-spaced with one blank line between paragraphs and following headings. Start paragraphs flush with left margin.

3.1 Content

An abstract provides preliminary information and investigations about a novel approach. Therefore, there is no specific predefined ratio between presentation of the method and of the results.

3.2 Headings

Major headings are to be numbered, centred in bold, preceded and followed by a blank line.

We do not recommend using subheadings and subsubheadings with a single page of text.

3.3 Footnotes

Mark footnotes in the text with a number (1); use consecutive numbers for following footnotes. Place footnotes at the bottom of the page, separated from the text above it by a horizontal line.

3.4 Figures and Tables

3.4.1 Placement: Figures and tables must be placed in the second page of the abstract. While figures and tables are usually aligned horizontally on the page, large figures and tables can be rotated by 90 degrees. If so, make sure that the top is always on the left-hand side of the page.

3.4.2 Captions: All captions must be centred directly beneath the illustration. Use single spacing if they use more than one line. All captions are to be numbered consecutively, e.g. Figure 1, Figure 2, Figure 3, .. and Table 1, Table 2, Table 3, ...

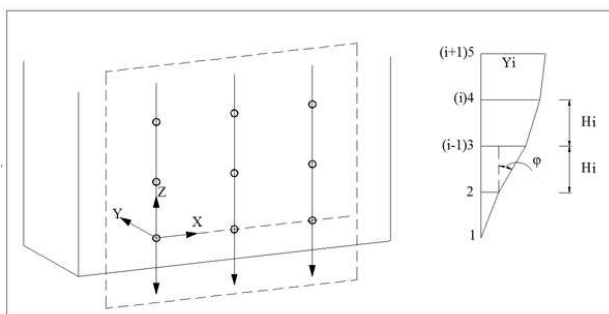


Figure 1. Figure placement and numbering.

3.4.3 Copyright: If your article contains any copyrighted illustrations or imagery, include a statement of copyright such as: © SPOT Image Copyright 20xx (fill in year), CNES. It is the author's responsibility to obtain any necessary copyright permission. After publication, your article is distributed under the Creative Commons Unported License and you retain the copyright.

3.5 Equations, Symbols and Units

3.5.1 Equations: Equations must be numbered consecutively throughout the contribution. The equation number is enclosed in parentheses and placed flush right. Leave one blank lines before and after equations:

$$x = x_0 - c \frac{X - X_0}{Z - Z_0}; y = y_0 - c \frac{Y - Y_0}{Z - Z_0}, \quad (1)$$

where c = principle distance
 x, y = image coordinates
 X_0, Y_0, Z_0 = coordinates of projection centre
 X, Y, Z = object coordinates

3.5.2 Symbols and Units: Use the SI (Système International) Units and Symbols. Unusual characters or symbols must be explained in a list of nomenclature.

3.6 References

References must be cited in the text, thus (Smith, 1987b), and listed in alphabetical order in the reference section. While references are optional, maximum 8 references are permitted for abstract-based submissions. The following arrangements must be used:

3.6.1 References from Journals: Journals must be cited like (Smith, 1987a) or (Michalis and Dowman, 2008). Names of journals can be abbreviated according to the "International List of Periodical Title Word Abbreviations". In case of doubt, write names in full.

3.6.2 References from Books: Books must be cited like (Förstner and Wrobel, 2016).

3.6.3 References from other Literature: Other literature must be cited like (Smith, 1987b) and (Smith, 2000).

3.6.4 References from Websites: References from the internet must be cited like (Chan and Qin, 2017) and (Maas et al., 2017). Use of persistent identifiers such as the Digital Object Identifier (DOI) rather than URLs is strongly advised. In this case last date of visiting the website can be omitted, as the identifier will not change.

3.6.5 References from Research Data: References from research data must be cited like (Dubayah et al., 2017).

3.6.6 References from Software Projects: References to a software project as a high level container including multiple versions of the software must be cited like (GRASS Development Team, 2017).

3.6.7 References from Software Versions: References to a specific software version must be cited like (GRASS Development Team, 2015).

3.6.8 References from Software Project Add-ons: References to a specific software add-on to a software project must be cited like (Lennert and GRASS Development Team, 2017).

3.6.9 References from Software Repository: References from software repositories must be cited like (Gago-Silva, 2016).

References

- Chan, K. L., Qin, K., 2017. Biomass burning related pollution and their contributions to the air quality in Hong Kong. *Int. Arch. Photogramm. Remote Sens. Spatial Inf. Sci.*, XLII-2/W7, 29–36. doi.org/10.5194/isprs-archives-XLII-2-W7-29-2017.
- Dubayah, R., Swatantran, A., Huang, W., Duncanson, L., Trang, H., Johnson, K., Dunne, J., Hurtt, G., 2017. CMS: LiDAR-derived Biomass, Canopy Height and Cover, Sonoma County, California, 2013. ORNL DAAC, Oak Ridge, Tennessee, USA. doi.org/10.3334/ORNLDAAAC/1523.
- Förstner, W., Wrobel, B., 2016. *Photogrammetric Computer Vision*. Springer Nature, Cham.
- Gago-Silva, A., 2016. GRASS GIS in Grid Environment. doi.org/10.6084/m9.figshare.3188950.
- GRASS Development Team, 2015. Geographic Resources Analysis Support System (GRASS) Software, Version 6.4. Open Source Geospatial Foundation. grass.osgeo.org (1 June 2017).
- GRASS Development Team, 2017. Geographic Resources Analysis Support System (GRASS) Software. Open Source Geospatial Foundation. grass.osgeo.org (20 September 2017).

Lennert, M., GRASS Development Team, 2017. Addon i.segment.stats. Geographic Resources Analysis Support System (GRASS) Software, Version 7.2. Open Source Geospatial Foundation. grass.osgeo.org/grass7/manuals/addons/i.segment.stats.html (1 June 2017).

Maas, A., Rottensteiner, F., Heipke, C., 2017. Classification under label noise using outdated maps. *ISPRS Ann. Photogramm. Remote Sens. Spatial Inf. Sci.*, IV-1/W1, 215–222. doi.org/10.5194/isprs-annals-IV-1-W1-215-2017.

Michalis, P., Dowman, I., 2008. A Generic Model for Along-Track Stereo Sensors Using Rigorous Orbit Mechanics. *Photogrammetric Engineering & Remote Sensing*, 74(3), 303–309.

Smith, J., 1987a. Close range photogrammetry for analyzing distressed trees. *Photogrammetria*, 42(1), 47–56.

Smith, J., 1987b. Economic printing of color orthophotos. Report KRL-01234, Kennedy Research Laboratories, Arlington, VA, USA.

Smith, J., 2000. Remote sensing to predict volcano outbursts. *Int. Arch. Photogramm. Remote Sens. Spatial Inf. Sci.*, XXVII-B1, 456–469.